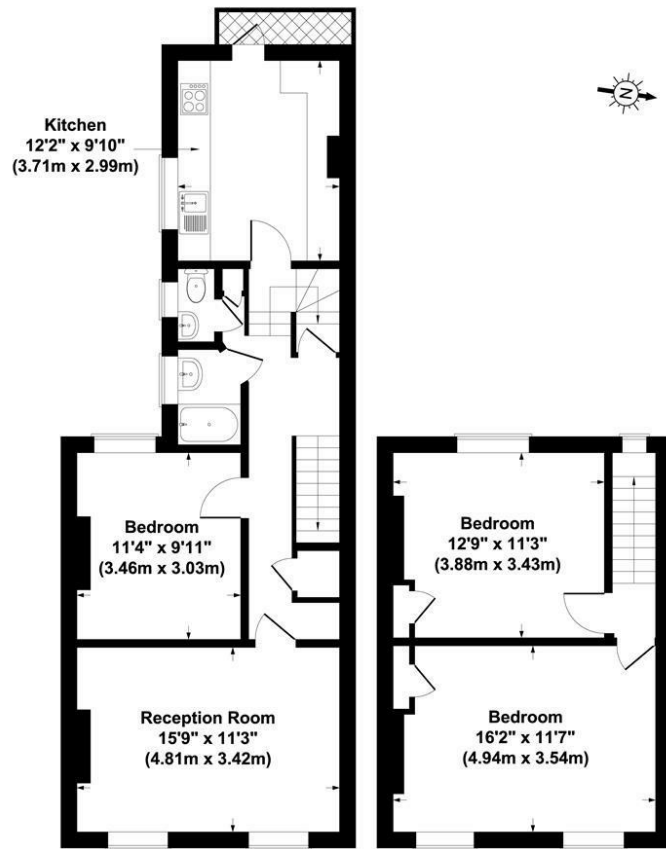




£1,450
Green Lanes
London, N4 1EU

EPC RATING: COUNCIL TAX BAND:



First Floor

Second Floor

Green Lanes, London, N4

Gross Internal Area 969 sq ft / 90 sq metres

Not to Scale. Produced by The Plan Portal 2019

For Illustrative Purposes Only.



Energy Efficiency Rating		Current	Potential
Very energy efficient - lower running costs			
(92 plus)	A		
(81-91)	B		
(69-80)	C		
(55-68)	D		
(39-54)	E		
(21-38)	F		
(1-20)	G		
Not energy efficient - higher running costs			
England & Wales		EU Directive 2002/91/EC	



Agents Note: Whilst every care has been taken to prepare these particulars, they are for guidance purposes only. All measurements are approximate and are for general guidance purposes only and whilst every care has been taken to ensure their accuracy, they should not be relied upon and potential buyers/tenants are advised to recheck the measurements



OFFICE ADDRESS
786-788 Green Lanes
London
N21 3RE

OFFICE DETAILS
0208 800 1155
management@paul-simon.co.uk